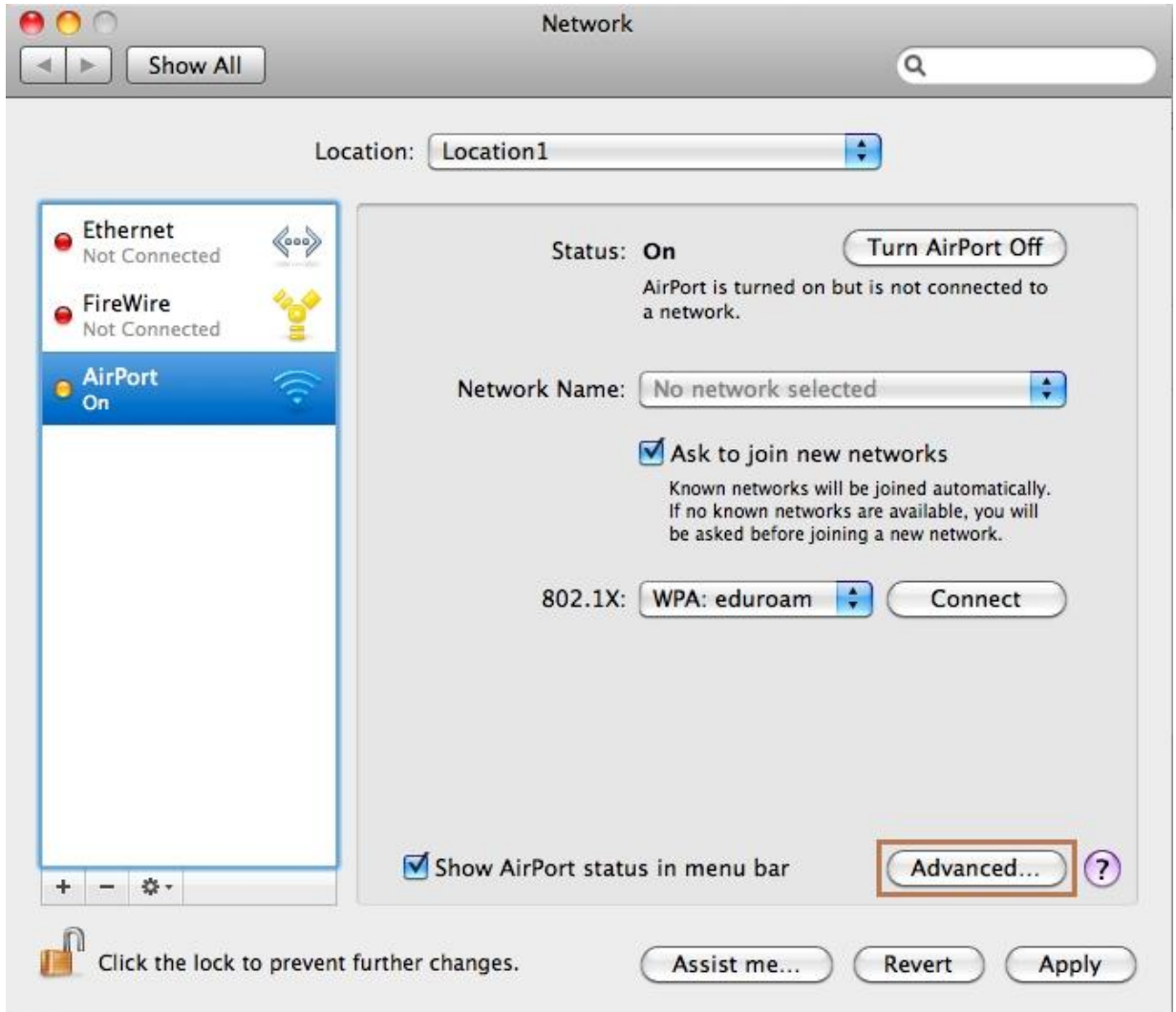


# Instructions for connecting to the wireless network service Eduroam

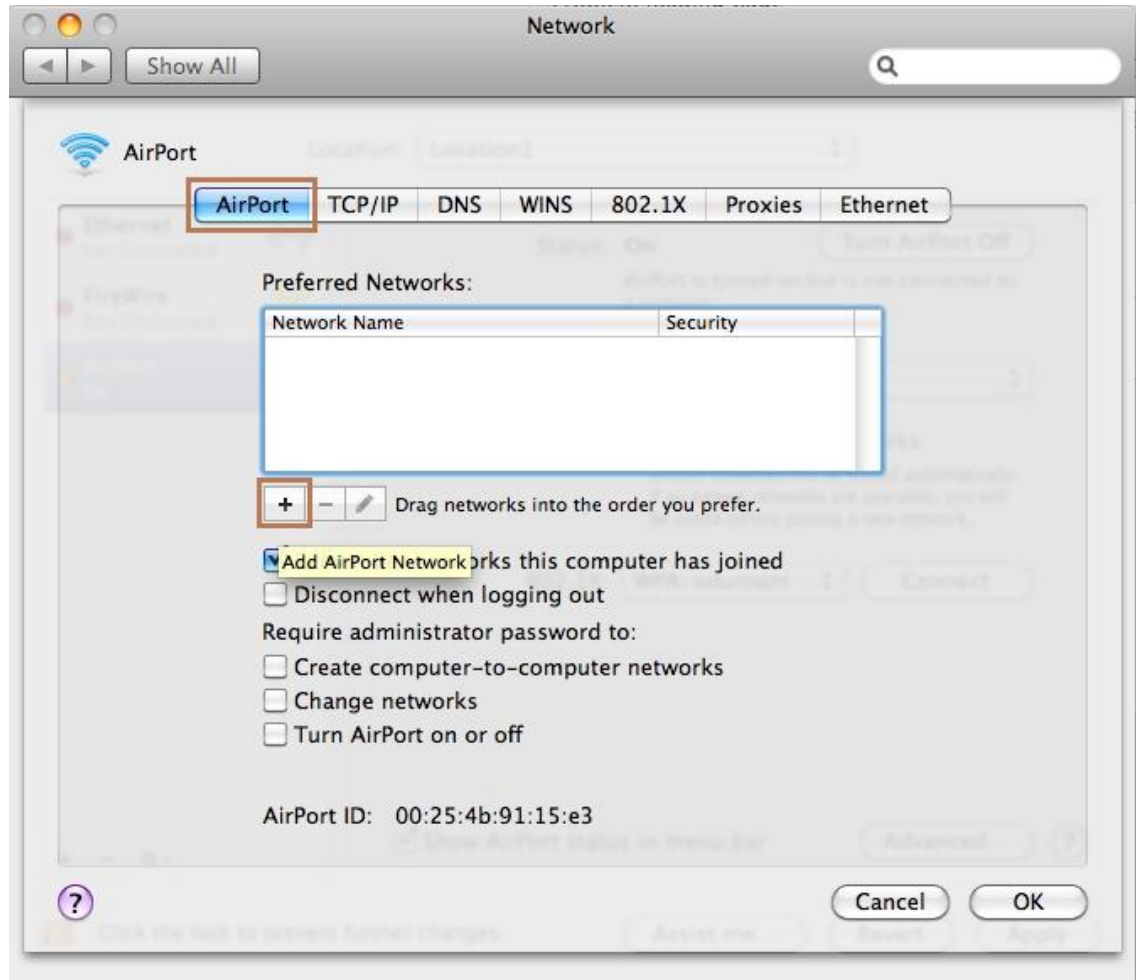
For proper configuration of your Mac, please follow the procedure below.

## Adjusting the wireless card to access the WiFi EDUROAM.

1. Navigate to **System Preferences -> Network -> Airport**, and click **Advanced**



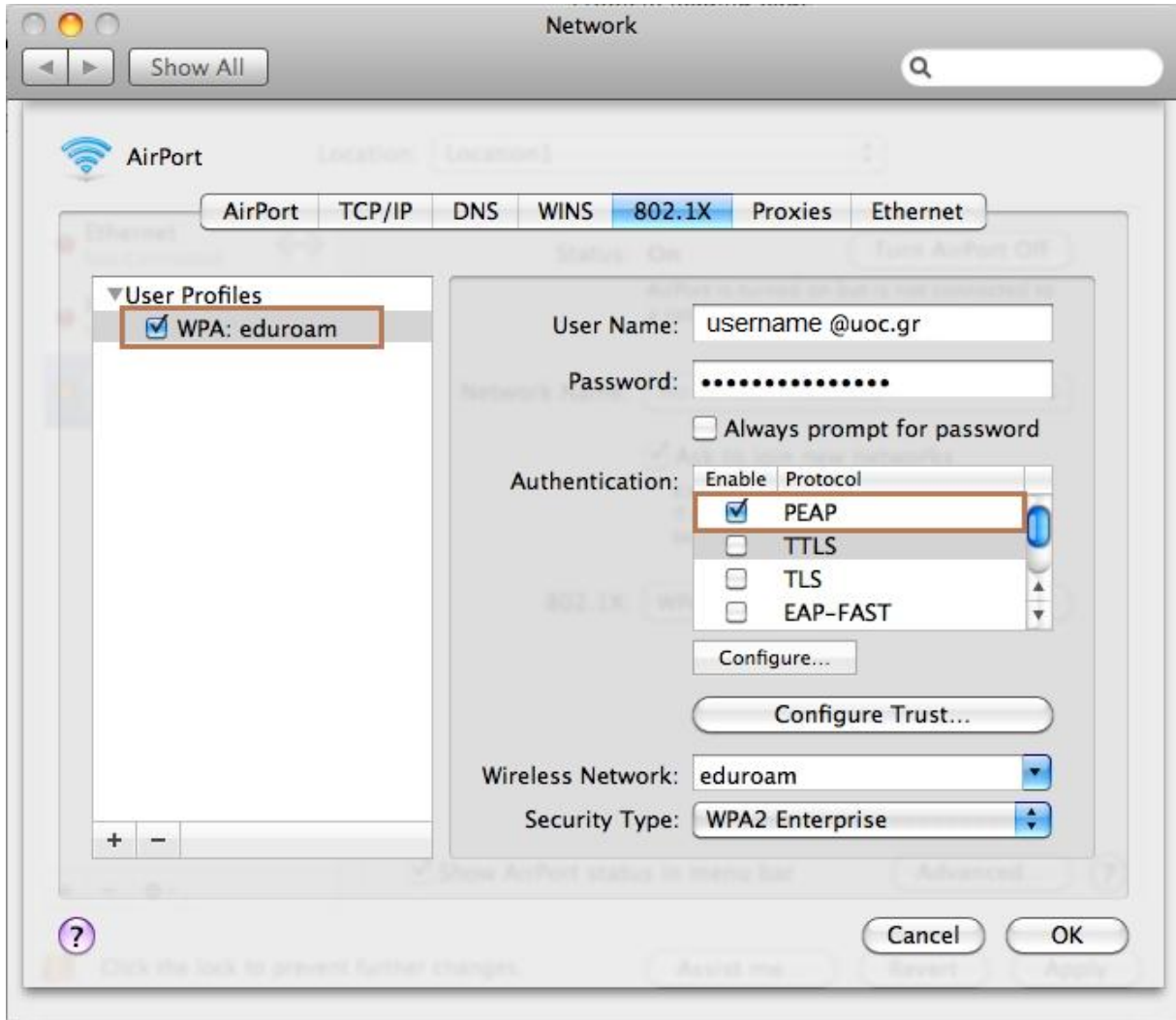
2. In the new window select the **AirPort** tab and click the “+” icon to add a new network.



3. In the field **Network Name** enter the name **eduroam**, for **Security** you should select **WPA2 Enterprise**, in the **Username** field you must enter your username in the form **username@uoc.gr** and below that the corresponding password, then you may click the **Add** button.



- Next select the **802.1x** tab and check the network **WPA: eduroam** check box, for **Authentication** select **PEAP** and click **OK**.



- Press **Apply** in the next window.

- Finally in the top right of the screen the wireless icon will appear, informing you that you have successfully connected.

