

Instructions for connecting to the wireless network service Eduroam

For proper configuration of your computer, please follow the procedure below.

I. Confirm that the wireless network card is enabled

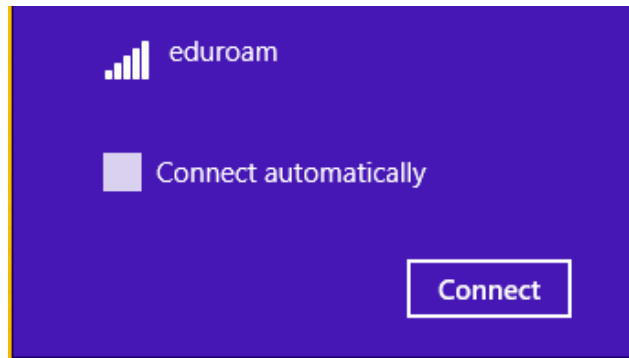
Most laptop have a switch for easy activation \ deactivation of the wireless network card. This switch is usually located on the front or side of the laptop, the wireless card should be enabled.

II. Adjust the wireless card to access WiFi EDUROAM.

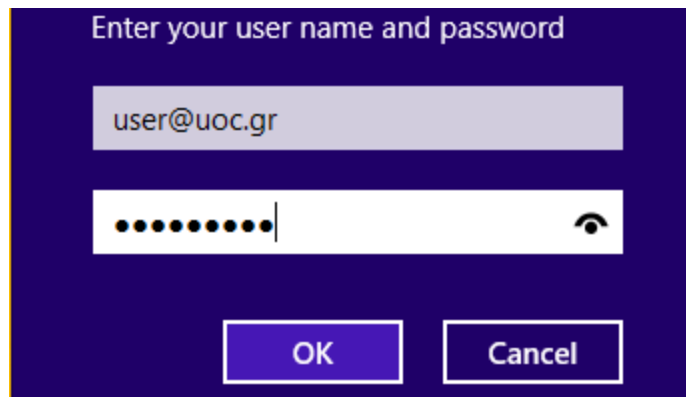
1. In your desktop click the icon shown below.



2. A list with the available networks will appear in the right side of your desktop. Select the network with the name **eduroam** and then press **Connect**.

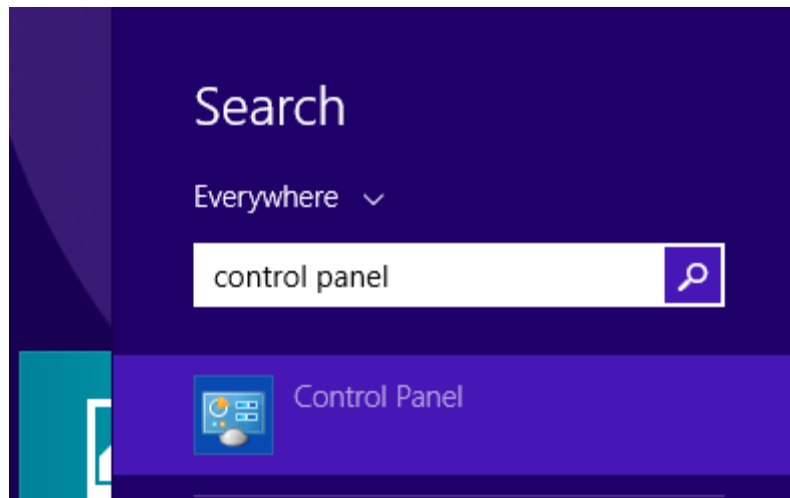


3. Fill out your user credentials, **username** (in the form username@uoc.gr, username@someUniversity.org etc) and the corresponding **password** and click **OK**.

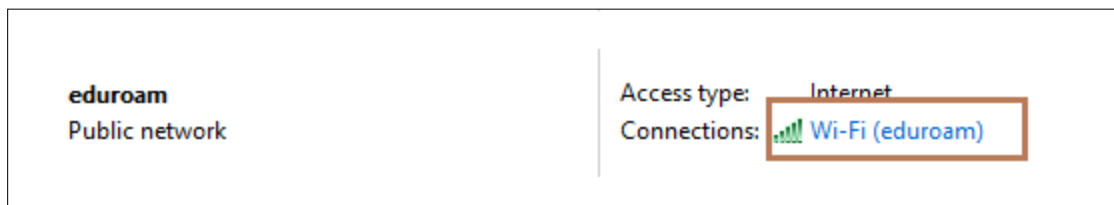


4. Navigate to the applications screen of Windows 8 (by pressing the start key).

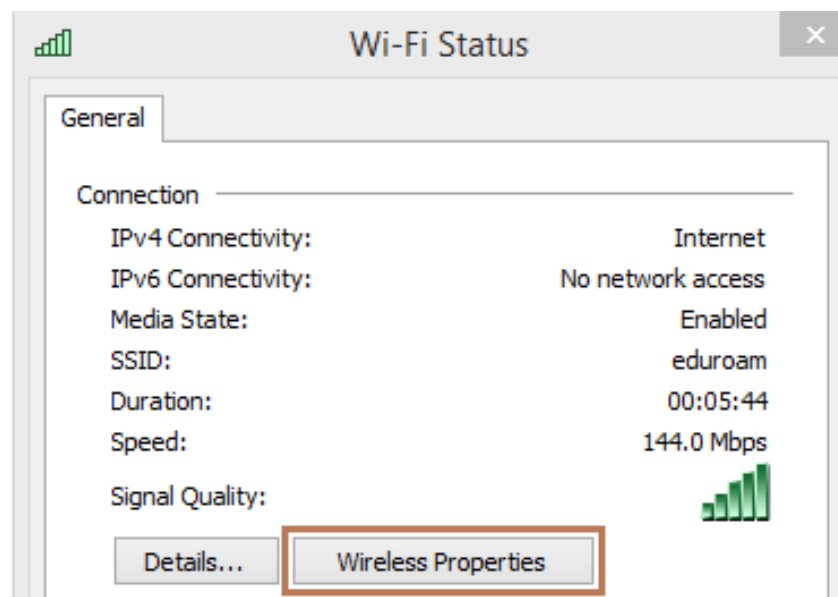
5. Type **Control Panel** and click the **Control Panel** icon as shown in the figure bellow.



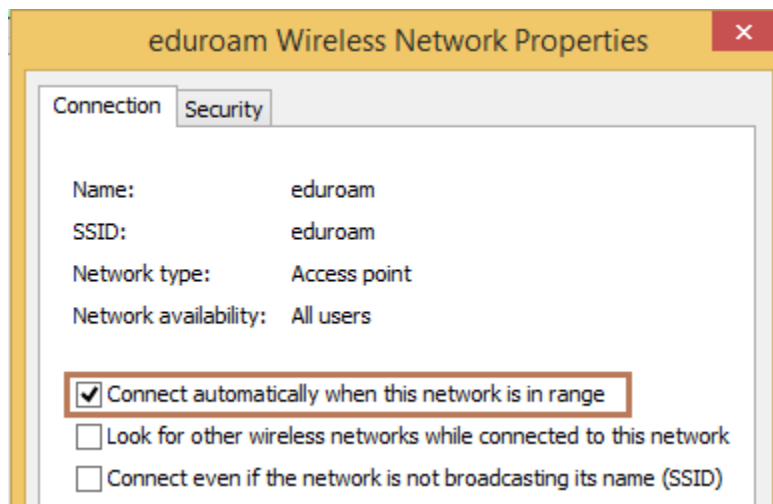
6. Press **Network and Internet**.
7. Then press **Network and Sharing Center**.
8. The network **eduroam** should be visible as shown bellow, click on this network.



9. A new window will appear, select **Wireless Properties**.



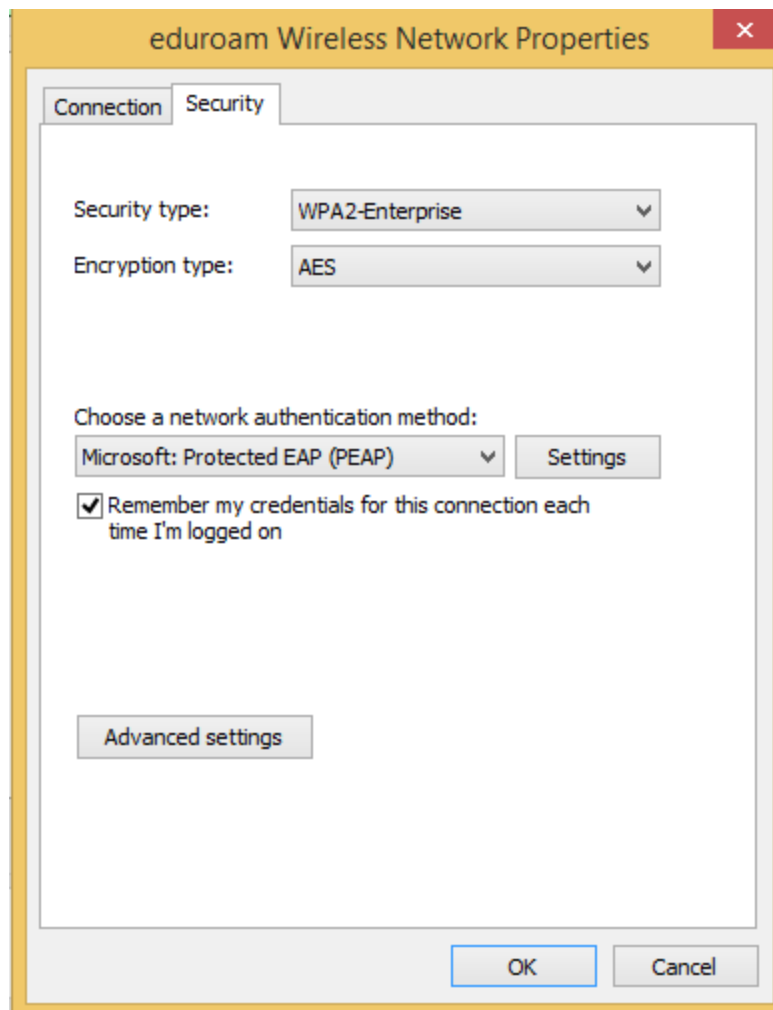
10. In **Connection** tab you should select only the first checkbox and disable all others.



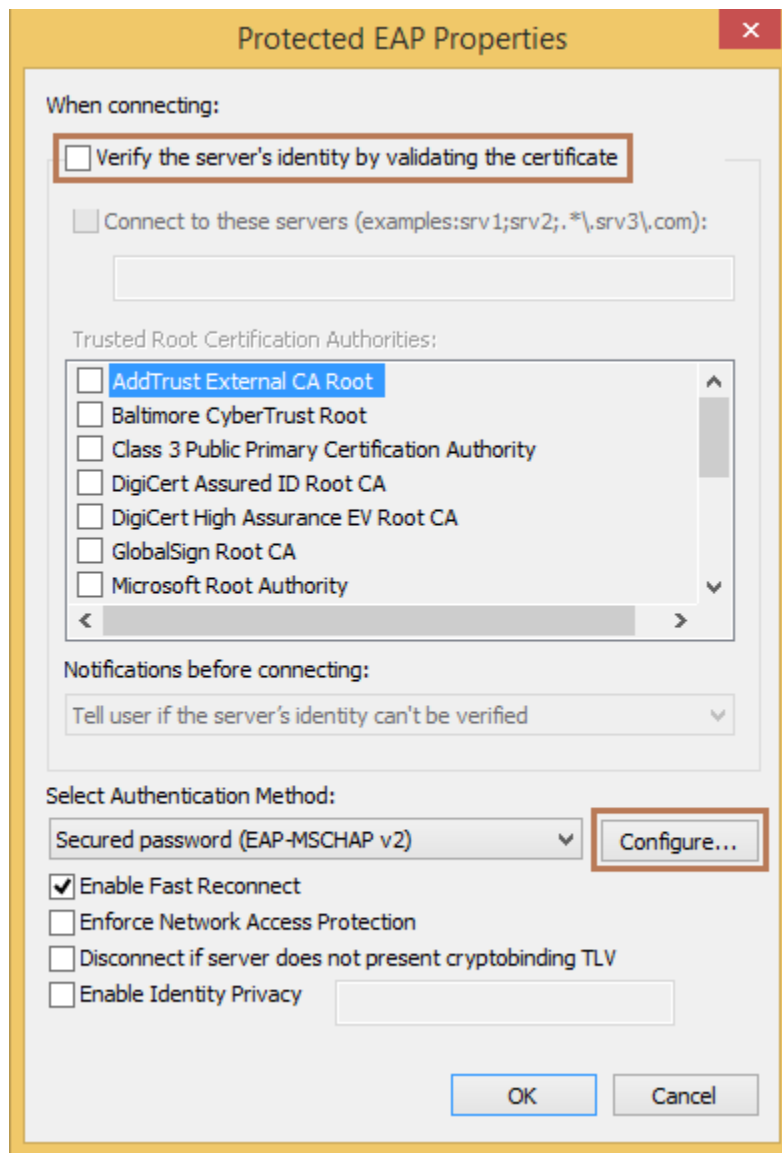
11. Select the **Security** tab

12. In **Security Type** select **WPA2-Enterprise**, for **Encryption type** select **AES** and for **authentication method** select **PEAP** as shown in the image bellow.

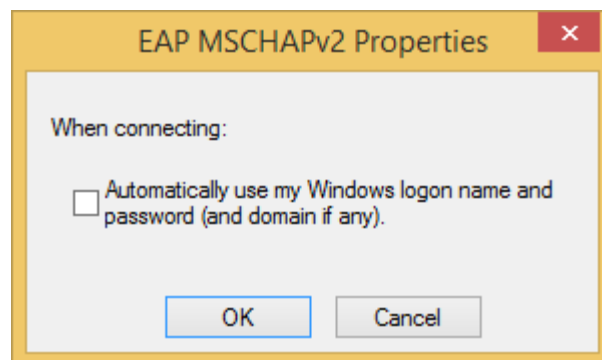
13. Then click the **Settings** button.



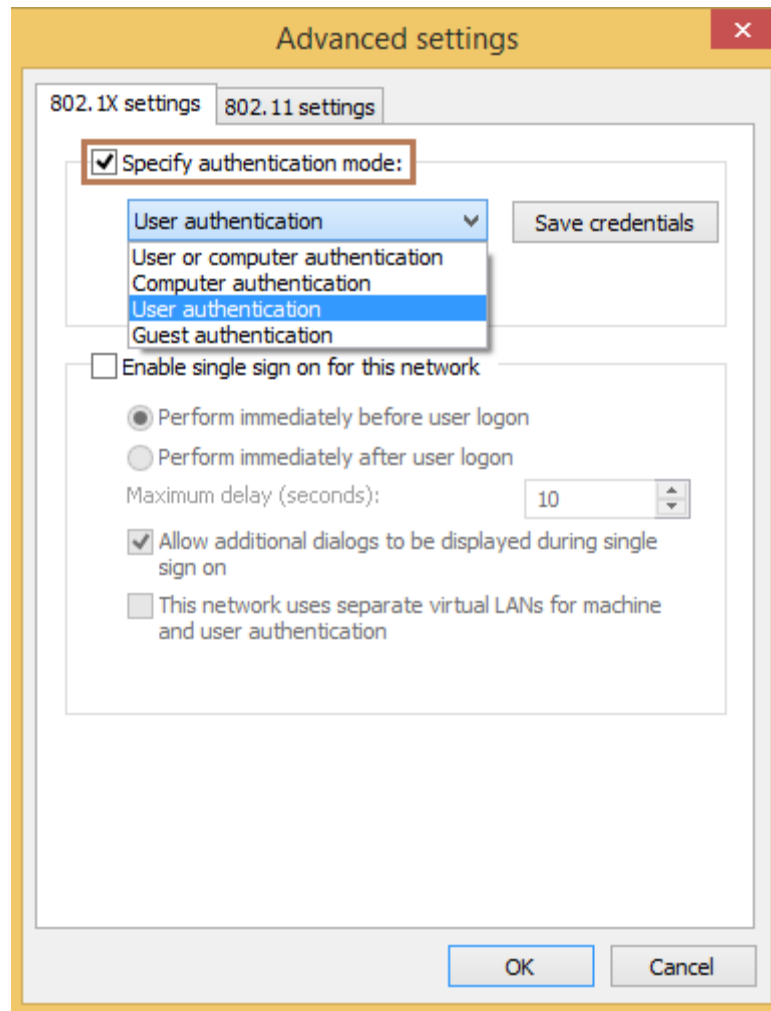
14. Uncheck **Verify the server's identity** and click the **Configure** button.



15. Uncheck the option **Automatically use my Windows logon name and password**.



16. Click **OK** for all windows to close until you see the window of step **12** with the name **eduroam Wireless Network Properties**. In this window press **Advanced Settings**.
17. In the new window that will appear select **Specify Authentication Mode** and in the menu below choose **User authentication** then close all open windows by pressing **OK**.



18. Close the last window by pressing **Close**.
19. After closing all windows it is possible that you will disconnect from eduroam network, by following steps 1-3 you can reconnect and by enabling **Connect automatically** windows will automatically connect to eduroam network if in range.