

## Instructions for connecting to the wireless network service Eduroam

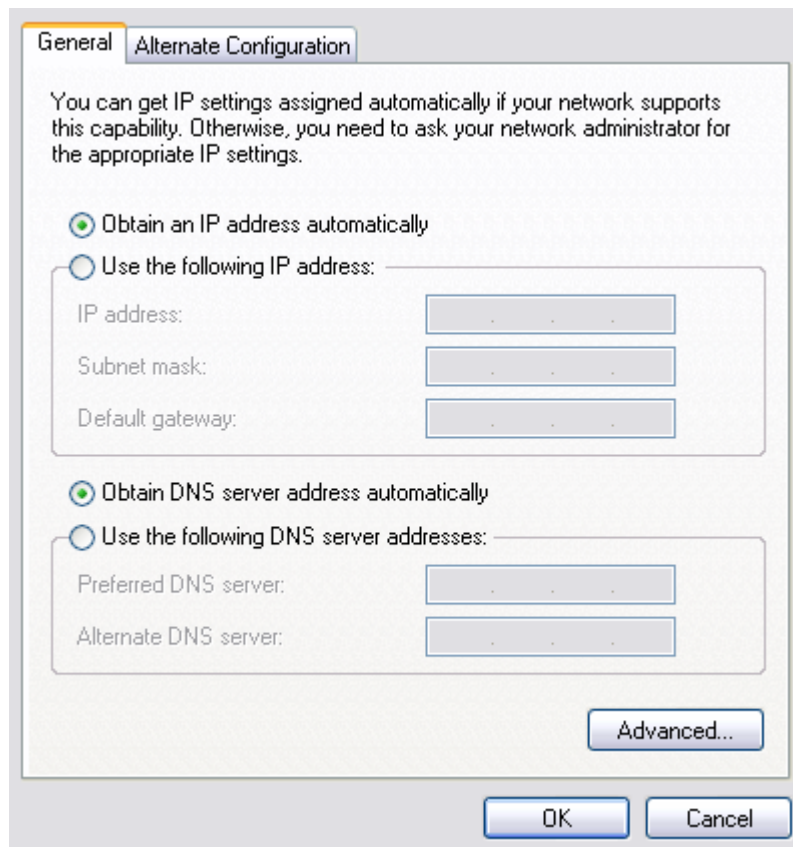
For proper configuration of your computer, please follow the procedure below.

### I. Confirm that the wireless network card is enabled

Most laptop have a switch for easy activation \ deactivation of the wireless network card. This switch is usually located on the front or side of the laptop.

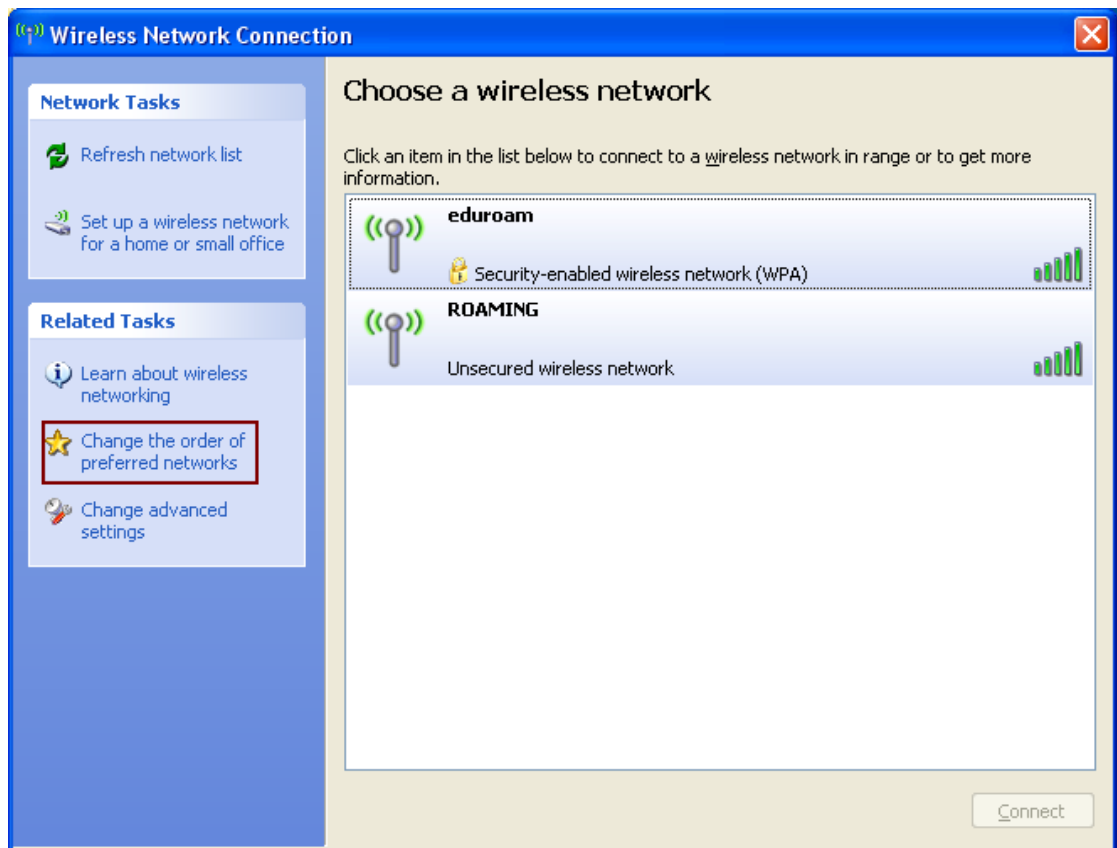
### II. Automatic acquisition of ip address (not required if DHCP is enabled).

1. Navigate to **Start** menu.
2. Choose **Control Panel**.
3. Then **Network Connection** .
4. Right click at **Wireless Network Connection**.
5. Select **Properties**.
6. Select **Internet Protocol (TCP/IP)**.
7. Click at **Properties** button.
8. A new window will appear (shown bellow) where you should enable the options **Obtain an IP address automatically** and **Obtain DNS server address automatically**.
9. Close all open windows by pressing **OK**.

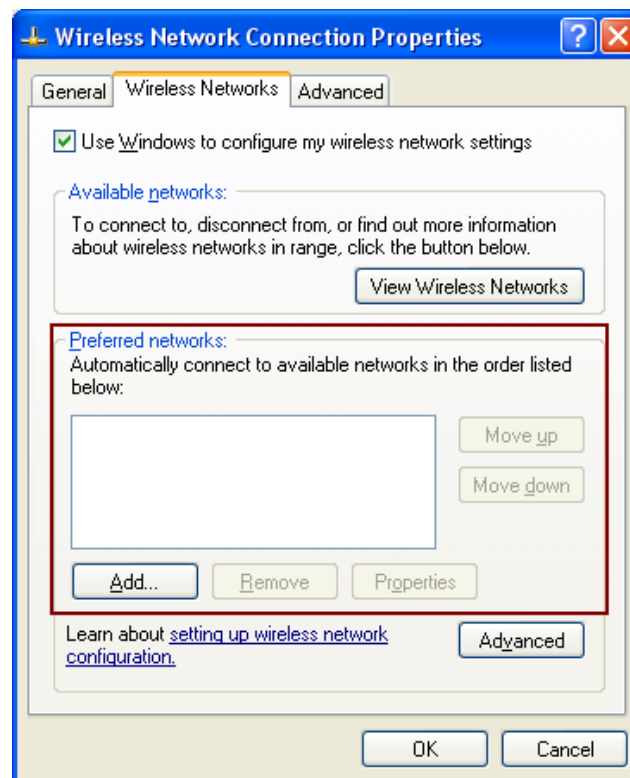


### III. Adjust the wireless card to access WiFi EDUROAM

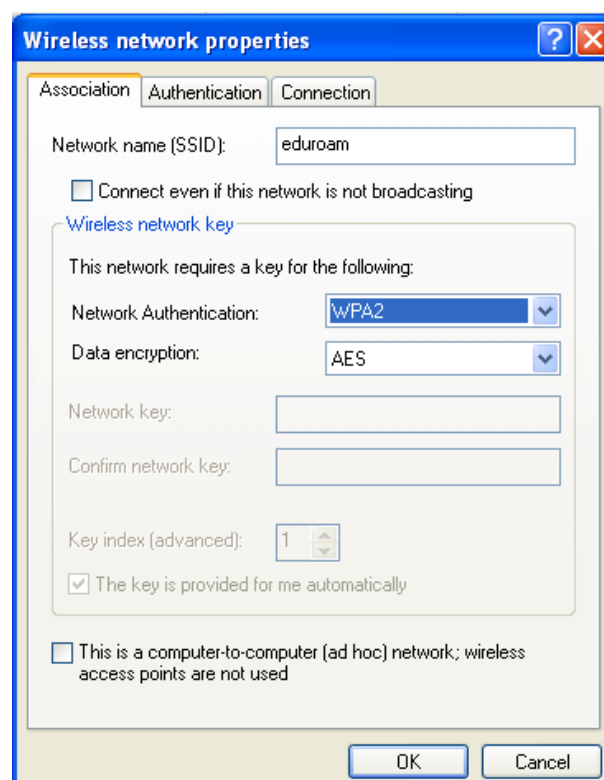
1. Navigate to Start menu.
2. Choose **Control Panel**.
3. Then **Network Connection** .
4. Right click at **Wireless Network Connection**.
5. Select **View available wireless networks**.
6. Press the **Refresh Network List** button.
7. Select the **eduroam** network from the list.
8. Then click the **Change the order of preferred networks** button.



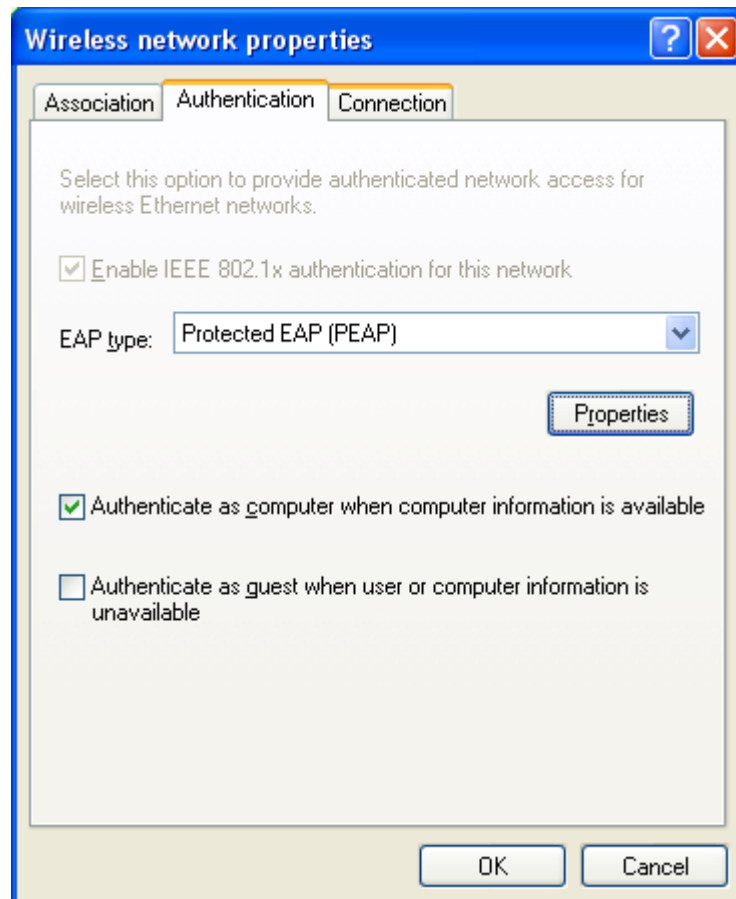
9. If eduroam does not appear in the **Preferred networks** list, click the **ADD** button.



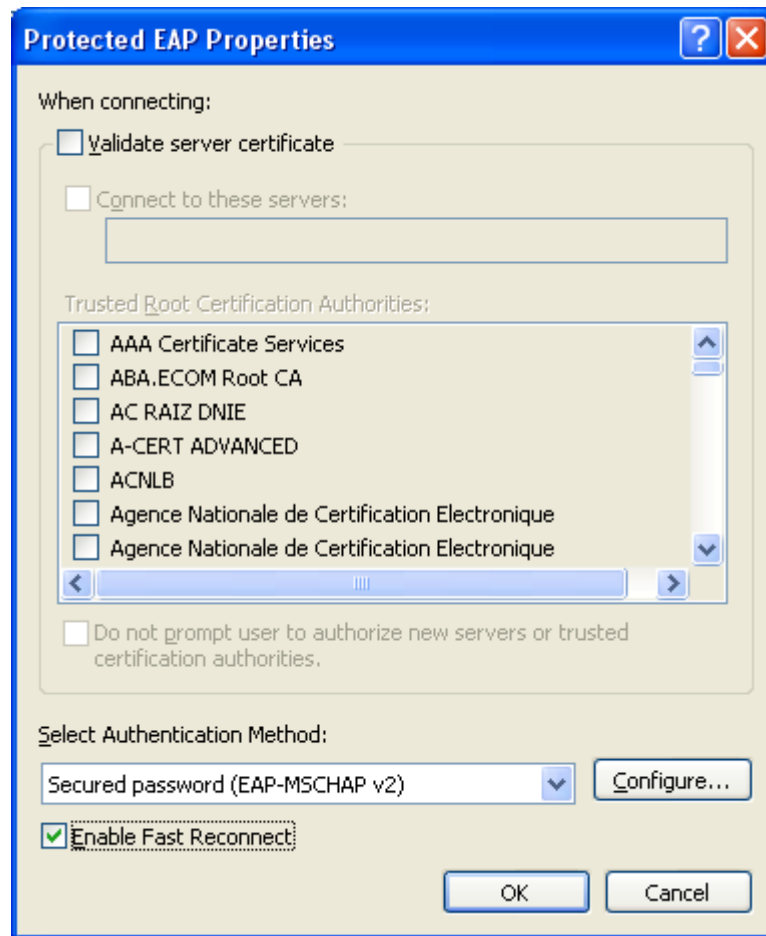
10. In case that **eduroam** already appears in the **Preferred networks** list, then select it and click at **Properties** button. The window below will popup.



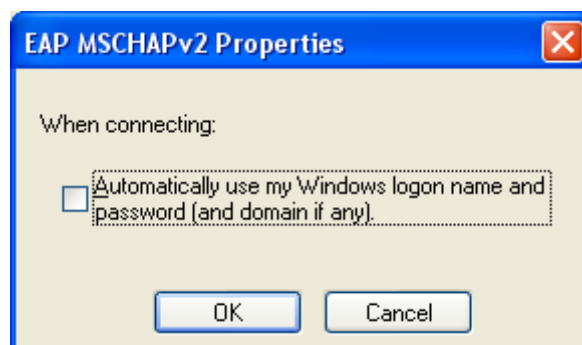
11. In **Network name (SSID)** field, type **eduroam**, in **Network Authentication** choice menu, choose **WPA2** and for **Data encryption** choose the **AES** option.
12. Select the **Authentication** tab, for **EAP Type** choose **PEAP** and then click at the **Properties** button.



13. Uncheck the **Validate server certificate** checkbox, check **Enable Fast Reconnect** and click **Configure**.

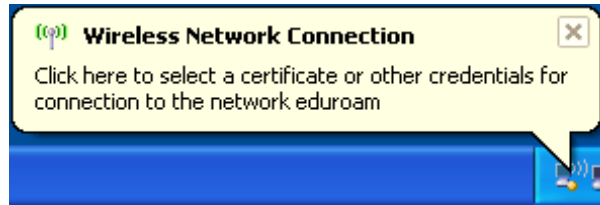


14. Uncheck the **Automatically use my Windows logon name and password** option and click the **OK** button.



15. Close all open windows by clicking **OK**.

16. Whenever the following message appears (image bellow) **click** on it.



17. Enter your **username** (should be in the form username@uoc.gr, username@anotherUniversity.org etc.) and the corresponding **password** and click **OK**.



18. If the following message appears, means that you have successfully connected.

